

Winsen MapPoint Interface

Introduction

Microsoft® MapPoint® is business mapping software that combines powerful mapping and analysis tools with the simplicity of Microsoft Office. Designed for everyday business use, MapPoint allows users to easily locate and illustrate points on maps, integrate maps into Microsoft Office documents, and quickly identify business trends on a map, with either the user's own data or up-to-date, detailed demographic information.

The Winsen MapPoint® Interface allows you to export customers name and address to a Microsoft MapPoint map. This interface has the ability to export current customers or all customers to a map displaying pushpins with the customers name and address. A pushpin can be selected to display customer information such as name address and unit number.

System Requirements

In addition to the minimum system requirements required by Winsen the following is also required.

410 MB of available hard disk space (1.02 gigabytes for full configuration)
Users without Windows XP, Windows 2000, Windows Me, or Office 2000 Service Release 1 (SR-1) require an extra 50 MB of hard disk space for System Files Update

Licensing

Microsoft® MapPoint® is a licensed Microsoft® Product and may require activation by the Microsoft Corporation. To use this product you must agree to the terms included in the package your software was received in.

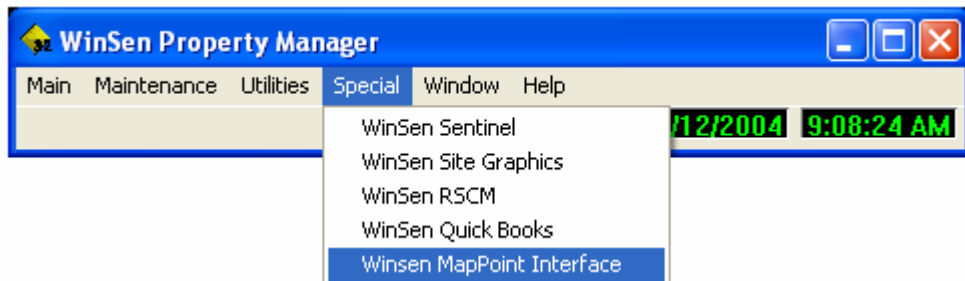
The Winsen MapPoint® interface is created and distributed by Sentinel Systems, Corp. It is licensed as an option of the Winsen program. To use the program a valid license key must be issued by Sentinel Systems, Corp. Please contact your sales representative for additional information. Prior to licensing, the interface will run in a demonstration mode displaying an image of a map with customer data.

Installation

The interface is installed from the Winsen setup program by selecting Winsen MapPoint interface from the setup menu. A “Winsen MapPoint Interface” menu item will be added to the Special Menu of the Winsen Property Manager. After the installation is complete you can install the Microsoft® MapPoint® software. To install Microsoft® MapPoint® insert the MapPoint® CD and follow the on screen instructions.

Usage

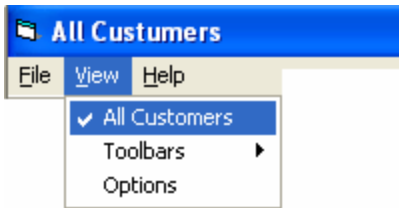
To export Customer Data to the Winsen MapPoint® interface from the Winsen Special Menu.



Microsoft® MapPoint will be opened displaying current customers.

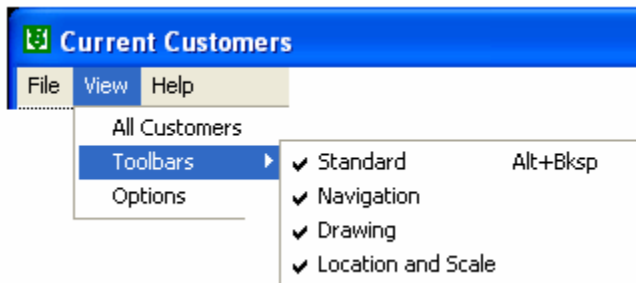
Viewing

To toggle viewing between Current Tenants and All Tenants select All Customers from the view menu. Microsoft® MapPoint determines the best view based on the addresses of all customers currently in Winsen. A site pin will be displayed for each site listed in the Site Information, Site Setup section of Winsen. Using options in MapPoint the view can be adjusted as needed.



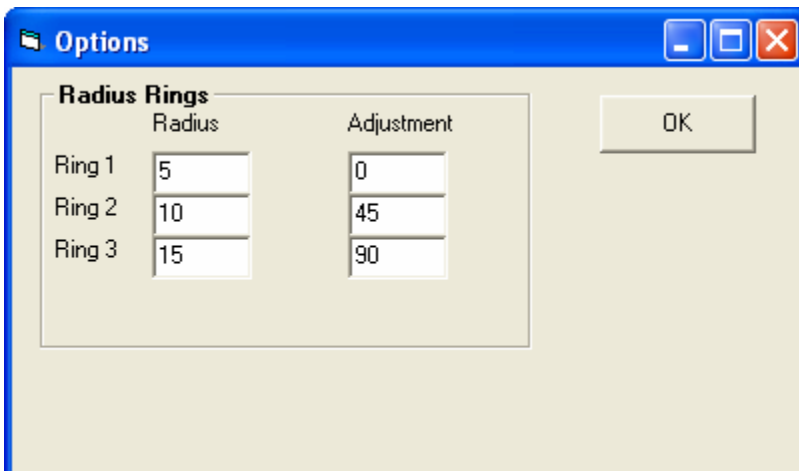
Toolbars

Toolbars available for editing the map can be selected via the toolbars selection of the View menu.



Radius Rings

Parameters for radius rings can be set using the Options selection of the View menu. The Radius is set in miles and ring rotation is set in degrees.



Printing

Selecting print from the File Menu will display the print dialog allowing selection of system printers to print the current map displayed on the screen.

Saving

Selecting Save from the File Menu will save the current map displayed on the screen. Save As can be used to select the destination file name and folder location the map is to be saved as.

Help

Selecting Contents from the help menu displays Helpful information for Using Microsoft® MapPoint. Selecting About Displays Version information for the MapPoint Interface.

Regional Settings

The Microsoft® MapPoint® Interface will use the Locale Specific setting operating system and the default county. This can be overridden with the following INI setting.

```
Winsen.ini           // File Name
[WINSEN]             // Section Name
Country = United States // Setting Name
```

These are the countries that can be set in Regional settings or added to the ini file.

| | | | |
|---------------|-----------|---------------|--------------|
| United States | Australia | Mexico | Albania |
| Argentina | Austria | Bangladesh | Belarus |
| Belgium | Bolivia | Brazil | Bulgaria |
| Canada | Chile | China | Colombia") |
| CzechRepublic | Denmark | Ecuador | Estonia |
| Finland | France | FrenchGuiana | Georgia |
| Germany | Greece | Hungary | Iceland |
| India | Indonesia | Ireland | Italy |
| Japan | Latvia | Liechtenstein | Lithuania |
| Luxembourg | Malaysia | Mexico | MultiCountry |
| NorthKorea | Norway | Paraguay | Peru |
| Poland | Portugal | Romania | Russia |
| Slovakia | Slovenia | SouthAfrica | SouthKorea |

Spain
TheNetherlands
United States

Suriname
Turkey
Uruguay

Sweden
Ukraine
Venezuela

Switzerland
UnitedKingdom